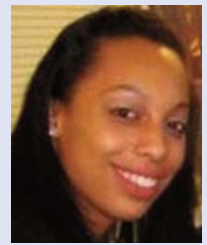


InsideASU



ASU student excels as M&M Mars intern
See page 4.

THE PRESIDENT'S CORNER



Dr. Everette J. Freeman

Finding solutions to problems

Since late April oil has been gushing from an under-sea oil well in the Gulf of Mexico. Despite repeated attempts to stop the geyser of crude, the gushing continues.

I'm not going to join the debate about who did what or who's to blame, but those are issues that will need to be worked out in the near future. There are some facts we must consider.

The back-up measures that were in place to prevent such a disaster failed. Now tar balls are washing onto beaches from Louisiana to Florida and great currents of oil are flowing into marshes and wetlands.

The prognosis isn't good. It will take years to rehabilitate the environment.

In the meantime, hard-working men and women are without employment.

See **PRESIDENT** on page 2.

King-Jupiter takes the reins as dean of the ASU College of Education

By Cindy Gambill
Executive editor

As Dr. Wilburn Campbell prepares to retire next week as dean of the Albany State University College of Education, culminating a 42-year career at ASU, a new dean came on board Monday to ease the transition.

With more than two decades of experience in higher education, Dr. Kimberly L. King-Jupiter is already impressed with the College of Education.

"These are some of the hardest working faculty I've ever encountered," King-Jupiter said. "It's truly a privilege to lead this College," she said. "The College has one of the hardest working faculties. I think they do a tremendous job. My duty

is to attract resources – financial and otherwise – to make their job easier so they can just focus on the work at hand."

King-Jupiter spent the past two years as the associate dean and associate professor of the College of Education at Lewis University in Romeoville, Ill. Before that she spent 11 years in various positions at Auburn University, in Auburn, Ala. The last title that she held at Auburn University when she left

See **DEAN** on page 6.



Dr. Kimberly L. King-Jupiter

ASU to offer Master of Social Work Degree this fall

By Joseph West
Publications specialist

Albany State University will begin offering the Master of Social Work Degree (MSW) beginning this fall. The program, which will focus on the development of the advanced generalist scholar/practitioner, will provide students with opportunities to enhance the depth and breadth of their knowledge and skills in working with vulnerable children, families and adults.

"We are excited that we've been given permission by the Council on Social Work Education and approval from the Board of Regents to offer this program," said Dr. Marilyn Spearman, chair of the Department of Behavioral Sciences at ASU. "There is a great need in Southwest Georgia for people with the clinical background, experience and education that this program will provide."

Kwandelyn Wright, a case manager at Worth County

D F C S who participated in the title IV-E BSW program at ASU, said she looks forward to pursuing a master's degree through the new ASU MSW

See **DEGREE** on page 6.



Dr. Marilyn Spearman

Miss ASU in Ebony magazine's online poll

Coronation of the Miss Albany State University 2010-2011 won't take place until Homecoming Week, but Ali'Yah Arnold is already busy representing the Golden Rams.

Arnold is one of 33 young ladies featured in Ebony magazine's HBCU Campus Queens Online Poll.

Since 1975 the magazine has showcased HBCU Campus Queens each year. This year the top 10 queens to receive the most votes in the online poll will be featured in the September issue of Ebony. The ASU community has the power to help Miss ASU get the honor of being one of Ebony's featured Campus Queens for 2010. Vote today at www.ebonyjet.com/campusqueens/



Ali'Yah Arnold

InsideASU

InsideASU is a weekly electronic publication produced by the Office of University Communications. All submissions are due by noon Wednesday for that Friday's issue. Send your submission to inside_asu@asurams.edu.

Dr. Everette J. Freeman
President

Clifford Porter, Jr.
Vice President
Institutional Advancement

Cindy Gambill
Executive Editor

Reginald Christian
Photographer

Joseph West
Publications Specialist

Pearlie Bowser
Administrative Assistant

Questions about *InsideASU*?
Contact Cindy Gambill at
430-1915 or
cindy.gambill@asurams.edu.

Check out previous issues of
InsideASU
[www.asurams.edu/ia/
universitycommunications
/publications](http://www.asurams.edu/ia/universitycommunications/publications).

Albany State University
504 College Drive
Albany, GA 31705



UpcomingEVENTS

The Upward Bound Summer Olympics

will be held at Albany State University on Saturday, June 26, beginning at 8:30 a.m. in the ACAD Auditorium. The one-day educational activity is designed to allow Upward Bound participants to enjoy a fun, exciting day of competition. About 200 competitors are expected. For more information, contact Leslie Charles at (229) 430-1918.

Banner (INB & SSB) will be unavailable June 29-July 1 during the year end close-out process.

Early and absentee voting in Dougherty County is available now through July 16 at the Dougherty County Elections Office in the Government Center from 8:30 a.m. to 5 p.m. Monday through Friday. Early and absentee voting will also be available July 12-16 from 8:30 a.m. to 5 p.m. in the Candy Room at 125 Pine Ave., next to the Flint Riverquarium. The primary election is July 20.

The 2010 GAHPERD (Georgia Association for Health, Physical Education, Recreation and Dance) Southwest District Workshop in Health & Physical Education will be held in the HPER Building at Albany State University 5-8 p.m. Friday, July 16, and 9 a.m.-5 p.m. Saturday, July 17. Session leaders will include ASU faculty and master teachers from Dougherty, Lee, Mitchell and Cobb counties. The workshop will include programs such as standards-based instruction in health and physical education, the implications of PECAT/HECAT and Fitnessgram in physical education, training information in

strength and conditioning and current health-related topics, fitness-oriented rhythms and games, re-certification/certification in CPR/AED and much more! Attendees must attend and complete the 10-hour, two-day workshop for one (1) PLU. The preregistration deadline is July 12. For more information, visit www.gahperd.org or contact LaTonya Conner, Southwest District representative at latonya.conner@asurams.edu or (229) 430-4755.

The Center for Excellence in Teaching, Learning and Advising presents the following **supplemental instruction sessions**. For more information, call CETLA at 420-1199.

- Calculus I, 5-7 p.m. Mondays and Wednesdays, Simmons 110, Jerome Myricks, facilitator
- College Algebra, 5:30-7:30 p.m. Mondays and Thursdays, Simmons 102, Dr. Ghunaym Ghunaym, facilitator
- GACE I Basic Math, 5-7 p.m. Mondays and Wednesdays, Simmons 316, Harriett Thompson, facilitator
- Pre-Calculus with Trigonometry, 5-7 p.m. Tuesdays and Thursdays, Simmons 202, Dr. Zephyrinus Okonkwo, facilitator
- Organic Chemistry, 5-7 p.m. Mondays and Wednesdays, ACAD 234, Dr. Rajappa Manohar, facilitator

Recreational swimming time will be held 7 to 10 p.m. Tuesdays and Thursdays until July 13 at the HPER swimming pool. Lifeguards will be on duty. An ASU student ID card is required.

PRESIDENT continued from 1.

Their homes and businesses are as adrift as the plumes of oil in the Gulf of Mexico.

There is no single answer that will fix the problem. No one has a magic wand to wave and magically make everything better.

What we do have are great minds and compassionate hearts who are trying to develop solutions. It's a team effort that will involve so many different people with so many diverse backgrounds from engineers to lawyers, environmental scientists to economists.

While no one could have predicted this disaster or the magnitude of its impact, we have to be prepared to handle the situation.

That's why Albany State University students receive an education in a diverse array of subjects. There is no single one-size-fits-all portfolio of knowledge that's perfect for each person. Each person's experiences and interests add to the education obtained to produce a well-rounded, well-developed mind ready to approach the problems in life.

Just as the Gulf oil problem is being handled by a cadre of different people, there will be other issues in the future that will require a diverse team of professionals.

What about dealing with global warming and climate change? What happens when cars that get 40 mpg aren't efficient enough? How do we deal with providing clean water when the supply is scarce?

Right now no one has a simple solution to any of these issues, but it's quite possible in the years to come that Albany State University graduates could be among those who find the solutions to problems in the U.S. and around the world.

Until then it's up to us to make sure ASU students receive the best quality education possible so that when it's their time to find the answers, they'll have the tools they need to get the job done.

Albany State to host 2010 Upward Bound Olympics

By Joseph West
Publications specialist

Albany State University will host the 2010 Upward Bound South Georgia Olympics Saturday, June 26, at 8:30 a.m. in the ACAD auditorium. The Upward Bound Olympics is an educational activity that allows participants to showcase their academic skills in science, math, reading, arts and physical education.

The one-day educational activity is designed to allow Upward Bound participants to enjoy a fun, exciting day of competition. The Olympics, expected to draw between 50 and 60 participants from each school, is an annual event hosted by an Upward Bound participating institution.

This year students from Abraham-Baldwin Agricultural College, Andrew College and Valdosta State are expected

to compete with ASU students in the one-day event. Last year more than 200 students from four colleges in South Georgia and Alabama faced off in academic and athletic competitions at the Olympics held in Tifton.

This year's Olympics will include the following events and categories:

- Scholars Bowl
- Written Math Examination
- Spelling Bee
- Fine Arts Exhibit
- Literary Competition
- One-Act Play
- Speech
- Chess
- Scrabble
- Male & Female Basketball Tournaments
- Co-Ed Volleyball

Participants will compete in a round robin format with the top two teams battling it out for the championship. The activity is free and open to the public.

The ASU Upward Bound program provides academic support to high school students from low-income families and families in which neither parent holds a bachelor's degree in their preparation for college entrance. It provides academic instruction and a variety of other supports to help participants succeed in their pre-college performance and ultimately in their higher education pursuits. The goal of Upward Bound is to increase the rate at which participants complete secondary education and enroll in and graduate from institutions of postsecondary education.

For more information on the ASU Upward Bound Program and the South Georgia Regional Upward Bound Olympics, contact Leslie Charles at (229) 430-1918.

ASU announces its NASA SEMAA Summer of Innovation Program

By Joseph West
Publications specialist

The Albany State University NASA SEMAA program will launch a two-week Summer of Innovation (SOI) program July 12-23 at Monroe Comprehensive High School. The program will work with 1,000 students in grades fifth through eighth.

The Summer of Innovation program is designed to engage students in stimulating math and science-based education programs. NASA's goal is to increase the number of future scientists, mathematicians and engineers, with an emphasis on broadening participation of low-income, minority students.

ASU will implement its two-week non-residential program with an orientation to the sciences that includes such qualities as awareness, interest and motivation. Students will engage in hands-on workshops and a Digital Learning Network (DLN) guest speaker series.

Students will engage in 40 contact hours over a two-week period. Twenty-five percent of the contact hours will be spent on NASA content.

Students participating in the Summer of Innovation (SOI) will

further assist the nation in meeting the NASA administrator's priority "to inspire a rising generation of boys and girls to seek careers in science, technology, engineering and math." The proposed experience will bring real life application to the concepts learned throughout the year.

Detailed descriptions of Summer of Innovation activities are:

- Cosmic Connection to the Universe – A lecture of the solar system will be discussed during the day with hands-on activities. Students will be engaged in viewing a movie under the stars. Prior to the beginning of the movie, there will be a recap of the day's lecture.
- Life Here and Out There – Lecture will cover the hypothesis "Does life exist on other planets?"
- Let's Fly! Aeronautics Activities – Lecture will illustrate the effects of gravity and Newton's laws on the forces affecting flight. Students will spend the day in the Aerospace Education Laboratory (AEL) engaged in principles in aeronautics modules demonstrating the effects of wind properties on flight. Students will also test aircraft design on flight simulators and exercises

See **NASA SEMAA** on page 7.



Conservation Tip of the Week

Consult with your local nursery for information on plant selection and placement for optimum outdoor water savings.

(Source: Water – Use it Wisely
www.wateruseitwisely.com/
100ways/se.shtml)

For additional information about The Flint River Water Planning & Policy Center or waterSmart, contact:
Linda Means
P.O. Box 345
Albany, GA 31702-0345
Phone: (229) 430-2900
ext. 11
E-mail: lmeans@h2opolicycenter.org
Web: www.h2opolicycenter.org



FLINT RIVER
Water
PLANNING & POLICY
CENTER

ASU student interns with M&M Mars

By Cindy Gambill
Executive editor

When two faculty members in the College of Business suggested that Desirey Virgin apply for an internship at M&M Mars in Albany, she had no idea what it would mean.

The senior accounting major from Marietta didn't realize that M&M Mars was a large corporation that reached around the globe. She also didn't realize what an impact the internship would have on her.

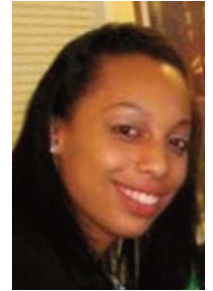
"The College of Business values internships for every one of our students," said Dr. Michael Rogers, ASU professor and chair of the Department of Business Administration. "M&M

Mars specifically requested a student for an internship they were creating for this summer. They told us that if it worked out well, they would offer other internship opportunities. We selected Ms. Virgin because she was already enrolled in our BUSA 3100 Internship course, and we knew she would represent us well – and indeed she has! The human resources manager for Mars was very complimentary about Ms. Virgin's performance."

Virgin's internship began June 14 with LaSheka Noble, the finance manager at M&M Mars in Albany. Virgin enjoys the other responsibilities along with the financial duties.

"I'm actually very involved in the internship,"

Virgin said. "I go to meetings. They ask for my input. I'm on the same



Desirey Virgin

level as the other managers. They set the same bar for me as everybody else."

Before the internship, she had plans to become a CPA. Now, she's looking at different accounting certifications that will combine her love of numbers with her love of people, such as the Certified Financial Accountant or Certified Management Account-

See **M&M** on page 7.

Southwest Georgia 4-H'ers Learn about GIS/GPS

Summer is an opportunity for K-12 students throughout Southwest Georgia to engage in a magnitude of activities in which they seek fun, educational opportunities, and adventure.

The participants in the first 4-H GIS/GPS Camp held June 14-18, 2010, experienced all of the above resulting in what might be the start of something great for Southwest Georgia.

Six Grady County and Thomas County students learned about geographic information systems/global positioning systems (GIS/GPS) in a week-long program that mapped Georgia Performance Standards (GPS) for math, science and social studies into activities spanning data collection, analysis, and the development of critical and spatial thinking while using geospatial technologies in developing maps.

Grady County 4-H, in partnership with Albany State University's Business Information Systems Degree program, pulled together a program comprised of teaching youth about science, engineering and technology (SET) – one of three National 4-H mission mandates. 4-H recognizes the need to help develop the future workforce of scientists, engineers and technology experts through the "One Million New Scientists, One Million New Ideas" 4-H



4-H GIS/GPS Camp participants thank Keith McFadden (back row, third from left) of the U.S. Geological Society for talking to them about the use of GIS and GIS careers. Participants include (front row from left) Halima Monds, Cazembe Monds, Alan Simms, Akintunde Monds; (back row) Adam Womble, Isaac Bivins, McFadden and Alisha Barnes, 4-H program assistant.

Youth Development Program.

Grady County 4-H was awarded a "Getting Started" grant provided by Environmental Systems Research Institute (ESRI) and the U.S. Department of Agriculture (USDA). The grant provided 4-H with textbooks and GIS soft-

See **GIS/GPS** on page 7.

NYSP participants learn about life



Each week students participating in the National Youth Sports Program hear from community leaders about different life topics. Gwen Jennings of the Albany Fire Department talks with Zion Malone, an NYSP participant and a student at Lamar Reese School during a presentation on Monday in the HPER Gym as ASU.



On June 18, Dougherty County Sheriff Kevin Sproul and several inmates from the Dougherty County Jail talked to NYSP participants about the importance of making good decisions. One of the inmates, Michael Stevenson, talks with a student about the kind of food that's served in jail.

DEAN continued from page 1.

in 2008 was Director of Outreach Planning and Faculty Engagement in the Office of the Vice President for University Outreach.

“My primary area of interest is equity – the ability that we have to deliver an exceptional education to all children regardless of their background,” King-Jupiter said.

She notes that the need for exceptional education begins with students in kindergarten through 12th grade and continues into higher education.

“When that doesn’t happen, we are weakened as a nation because gifts are wasted,” she said.

Rather than saying the responsibility for education depends solely on the home situation or solely on the educators, King-Jupiter said everyone plays a role in a child’s education.

“It’s collective,” she said. “We do raise a child as a village.”

King-Jupiter encourages parents to turn off the TV and spend time with their children. Even when parents can’t answer a child’s question, they can search for the answer with their child.

“As a parent, there’s no shame in not

Dr. Kimberly L. King-Jupiter

- Hometown: Gary, Ind.
- Bachelor’s degree in sociology, Grinnell College, Grinnell, Iowa, 1987
- Master’s degree in College Student Personnel Administration, Indiana University’s School of Education, Bloomington, Ind., 1993
- Doctorate in history, philosophy and policy studies with concentration in higher education administration and international and comparative education, Indiana University’s Department of Educational Leadership and Policy Studies, Bloomington, Ind., 1998



knowing, but we should take the journey with them,” King-Jupiter said. “As educators, we need to make sure kids take journeys that excite them. We need to provide them

with opportunities to exceed the minimum and reach the highest level they can achieve.”

When asked about where she sees the College of Education in five years, King-Jupiter shares her vision.

“In five years from now, we’ll be significantly bigger...As our enrollment increases, we’ll have to increase our staff,” she said. “Growth is not sufficient. We see not just growth, but the creation of teachers who are uniquely qualified and capable of dealing with students from diverse backgrounds, such as poverty, intellectual giftedness, English as a second language and those from more economically affluent backgrounds. We believe that in five years, we are going to be producing the types of educators the nation is clamoring for.”

While King-Jupiter is passionate about her work, she draws a line between the office and her home life.

“I value the balance in my life,” she said. “In my home, I’m just a mom and a wife.”

King-Jupiter and her husband, Vincent Jupiter, have three children, Vincent Jupiter, 15; Bailey Jupiter, 9; and Kiya Jupiter, 5.

DEGREE continued from page 1.

program.

“I am on the waiting list for the program,” she said.

As a case manager for children in foster care, Wright is on the front lines in intervening with vulnerable children and families and understands the unique challenges.

“I enjoy making a difference in the lives of these children and families,” she said. “I try to reunite the children with their parents, if that’s possible. If not, I try other options to improve the children’s situations.”

Supported by the Georgia Division of Family and Children Services (DFCS), the ASU MSW degree program will help meet the growing demand for social work specialists with credentials for direct client services. It will also meet the needs of students interested in obtaining a master’s level social work degree without having to travel a great distance.

The master’s degree program will allow us to be responsive to the need for persons in-place who are interested in continuing their learning,” said Levetta Jefferson, Title IV-E coordinator at ASU.

ASU currently has a title IV-E grant funded by the Georgia Division of Family and Children Services. That grant pays for tuition, fees, books and mileage for persons interested in a career in public child welfare or for current DFCS staff who wish to upgrade their professional skills and training. Once the students graduate from the program, they will usually be expected to work with DFCS a year for each year of academic training paid for by the DFCS.

Dr. Barbara Nowak, associate professor of social work, said the MSW program will ensure that students are prepared before being licensed.

“In order to sit for the license exam, students must have three years in practice and 120 supervised hours over a three-year period,” Nowak said. “Initially, the MSW classes will be held during evening hours, which are convenient to most practicing professionals.”

The MSW curriculum objectives, derived from the Council on Social Work Education’s Explicit Curriculum Educational Policy, requires 950 hours in field practicum experience. The 64-semester credit hour program consists of 32 credits of foundation followed by 32 credits of advanced coursework in prevention, intervention and treatment methods with vulnerable children, families and adults.

Takierra Dawson, MSW, a practicing social worker and current employee at Worth County DFCS, earned her master’s degree at a South Georgia university while working as a case manager.

“I’m glad that I was able to apply the things I learned in class to real cases,” she said. “That helped my learning a great deal. It was beneficial in that way. We need more workers with master’s level qualifications who know the theory and practice.”

The ASU program will provide another avenue for social workers in the area to obtain those qualifications. ASU’s is the sixth such program in the University System of Georgia. Other universities in the system offering a similar degree are Georgia State University, Kennesaw State University, Savannah State University, the University of Georgia and Valdosta State University.

ASU expects 20 students will be admitted to the MSW program in its first year. In the second year and every year thereafter until the program enters full accreditation, the program will maintain a steady total enrollment of 40 students.

The needs in the community dictate that vulnerable families need these services and that ASU provide them, Spearman said.

“The university’s strategic plan requires the social work program to help underserved communities and families,” Spearman continued.

ASU is currently enrolling students in the MSW program to begin this fall. Interested students may begin the application process by contacting the Graduate School at (229) 430-4862.

For more information on the ASU’s Master of Social Work Degree, contact the Department of Behavioral Sciences at (229) 430-4896.

NASA SEMAA continued from page 3.

using the wind tunnel.

- 3,2,1 Liftoff! Rocketry – A guest lecturer will speak to the students about the journey to becoming a rocket scientist.

- Climate, Weather and Climate Change – A local meteorologist will speak on climate on the earth. He/she will describe progress in understanding the human and natural driving forces of climate change, observed climate change, climate processes and attribution, and esti-

mates of projected future climate change.

- Robotics Explore – Students will participate in building and programming robots.

- Digital Learning Network (DLN) Guest Speaker Series – Students will tune into a live webcast with NASA experts.

- Professional Development – Teachers are offered in-service and pre-service professional development workshops in robotics, aeronautics, astronomy,

mathematics and science for K-12 teachers in conjunction with NASA using NASA curriculum and materials.

The ASU Summer of Innovation targets students in Dougherty, Lee, Worth and Terrell County Schools, Girl Scouts of Historic Georgia, YMCA, and Boys and Girls Clubs.

For more information contact Danielle Johnson in the NASA SEMAA office at (229) 430-2833.

M&M continued from page 4.

ant. Virgin plans to attend graduate school in New York before entering the corporate world.

This wasn't Virgin's first internship. As a high school senior, she interned with her uncle, an investor at Solomon, Smith and Barney in New Jersey.

Despite her knack for numbers, Virgin didn't start out as an accounting major. Her first major at ASU was psychology, but she quickly realized psychology wasn't for her. She thought back to the internship with her uncle and decided on accounting as her major.

"It was just a field that was a better fit for me," Virgin said.

Through the internship at M&M Mars, she's already realized how valuable real-world experience can be for a college student.

"A lot of the stuff we learn in class, I really didn't understand

it before the internship," Virgin said. "Now I can use what I know and capitalize on it."

Dr. Kathaleena Edwards Monds, ASU associate professor and chair of the Department of Accounting, Business Information Systems and Marketing, said, "Desirey embodies the essence of all ASU students. She possesses the fortitude, professionalism and intellect of an individual determined to succeed. I am delighted to have had the opportunity to serve as both her professor and chair. Her positive energy will ensure that her internship at M&M Mars will be equally positive."

The daughter of Gail and Gene Hopkins of Snellville and Ray Virgin of Atlanta, she graduated from Wheeler High School in 2006. Virgin will graduate from ASU with her bachelor's degree in accounting in May 2011.

GIS/GPS continued from page 4.

ware. Students utilized Garmin GPS units loaned by Albany State University. Students were required to obtain data points using the GPS units, upload that data into the GIS software and generate maps for display. They also went out into the community locating geocache. Geocaching is an outdoor game involving finding hidden treasures known as "cache," which are identified by latitude and longitude.

Keith McFadden of the U.S. Geological Society visited the group to discuss GIS careers and to discuss how GIS is used to map social events, such as the BP Gulf oil spill. The closing program featured a student-led program and a movie of the week's activities. All participants received plaques, certificates, T-shirts and a bag of geography items.

Future projects of the 4-H GIS/GPS team will involve recognizing GIS Day on Nov. 19, 2010, displaying of maps during county fairs, and ultimately partnering with the Southwest Georgia Regional Commission to engage 4-H'ers with the collection of GIS data, especially in rural communi-

ties. Such activities will benefit both students and their communities by providing youth with skills for workforce and career development and by providing communities with a group of individuals skilled with the talents to assist in collecting critical data (such as locations of fitness centers, 911 points, evacuation data, childhood obesity data, etc.) that could be useful in building communities from "the bottom up."

Community is based on people working together to create a wholesome society. Students have long been involved in shaping communities through education on a local level. Community development must embrace the involvement of people, and build upon this involvement through action. Camp Counselor Dr. Kathaleena Edward Monds will take steps to write a grant to assist in growing both the 4-H program in Grady County and the Business Information Systems degree at ASU by infusing a GIS/GPS niche into the existing curriculum and by partnering with Geography faculty. Monds is chair of the Department of Accounting, Business Information Systems



4-H GIS/GPS Camp Counselor Dr. Kathaleena Edwards Monds works with camp participants on a project.

and Marketing as well as co-director of the Center for Economic Education at Albany State University.

4-H'ers have long embraced the motto of "Head, Heart, Hands and Health" in working to build better communities. The students' work is on display at Roddenberry Memorial Library in Grady County June 19-26, 2010.

For more information about joining the 4-H GIS/GPS team, please contact Deron Rehberg at drehberg@uga.edu or 229-377-1312 or Kathaleena Edward Monds at kathaleena.monds@asurams.edu or 229-430-4777.

The Center for Excellence in Teaching, Learning and Advising

SUPPLEMENTAL INSTRUCTION SESSIONS

SUMMER SEMESTER 2010 SCHEDULE

<i>SI COURSE</i>	<i>DAYS</i>	<i>TIME</i>	<i>LOCATION</i>	<i>FACILITATOR</i>
Calculus I	Mondays/Wednesdays	5 – 7 pm	R.H. Simmons 110	Mr. Jerome Myricks
College Algebra	Mondays/Thursdays	5:30 – 7:30 pm	R.H. Simmons 102	Dr. Ghunaym Ghunaym
GACE I Basic Math	Mondays/Wednesdays	5 – 7 pm	R.H. Simmons 316	Mrs. Harriet Thompson
Pre-Calculus with Trigonometry	Tuesdays/Thursdays	5 – 7 pm	R.H. Simmons 202	Dr. Zephyrinus Okonkwo
Organic Chemistry	Mondays/Wednesdays	5 - 7 pm	Academic Building 234	Dr. Rajappa Manohar

For additional information and questions, please call CETLA at 229.420.1199

2010 GAHPERD SOUTHWEST DISTRICT WORKSHOP IN HEALTH & PHYSICAL EDUCATION

Sponsored by Albany State University HPER Department and
The Georgia Association for Health, Physical Education, Recreation and Dance

Pre-registration Deadline is July 12, 2010

Session leaders will include ASU faculty and master teachers from Dougherty, Lee, Mitchell and Cobb counties. The workshop will include programs such as standards-based instruction in health & physical education, the implications of PECAT/HECAT and Fitnessgram in Physical Education, training information in strength & conditioning and current health related topics, fitness oriented rhythms and games, re-certification/certification in CPR/AED and much more! Attendees must attend and complete the 10-hour, two-day workshop for one (1) PLU.

Lunch is not provided. Attendees will have a break for lunch.

Name _____

Home Mailing Address _____

City _____ State _____ Zip _____

Email _____

School _____ County of Employment _____

Work phone _____ Home phone _____

Location of Southwest District Workshop:

Albany State University
504 College Dr.
HPER Building
Albany, GA 31705

Dates and Times:

Friday, July 16, 5:00-8:00 p.m.
Saturday, July 17, 9:00-5:00 p.m.
**Friday on-site registration/sign-in, 4:00-4:50 p.m.
**Saturday sign-in 8:30-8:50 a.m.

For additional information please contact:

LaTonya Conner, M.Ed.
Southwest District Representative
www.gahperd.org

latonya.conner@asurams.edu
229-430-4755

Pre-registration deadline: Postmarked on or before July 12, 2010 (after this date attendees must register on-site and pay on-site fees). School Systems: Please send a completed form for each attendee with a school system check. One (1) professional development unit (PLU) will be available to attendees. All attendees should check with their school system's staff development coordinator for prior approval and needed documentation.

Make checks payable to GAHPERD and mail with this form to:

**Dr. Jacqueline T. Harbison
Executive Director
731 OAK Mountain Road, NW
Kennesaw, GA 30152**

Directions: From I-75: Merge onto GA-300 S/ Georgia Florida PKWY. Stay straight to go onto GA-62 W/Cordele RD. Continue to follow GA-62 W. Turn left onto Radium Springs Rd. HPER building on left.

Go to www.mapquest.com for more directions.

	GAHPERD Member	Non-GAHPERD Member
<u>Pre-registration:</u>		
Professional	\$25	\$30
Full-time Undergraduate/ Graduate Student	\$5	\$8

<u>On-site registration:</u>		
Professional	\$35	\$40
Full-time Undergraduate/ Graduate Student	\$8	\$10
Make checks payable to GAHPERD and mail to: Dr. Jacqueline Harbison, Executive Director 731 Oak Mountain Road, NW Kennesaw, GA 30152		

.....This is the only official registration form.....



2010 Golden Rams Football Schedule

<u>Date</u>	<u>Opponent</u>	<u>Site</u>	<u>Time</u>
8/28	Kentucky State Univ.*	Frankfort, KY	7:00 p.m.
9/11	Clark Atlanta Univ.* +	Albany, GA	7:00 p.m.
9/18	Tuskegee Univ.*	Tuskegee, AL	1:00 p.m. ^
9/25	Savannah State Univ.	TBA	TBA
10/2	Lane College*	Albany, GA	7:00 p.m.
10/9	Miles College* #	Albany, GA	2:00 p.m.
10/16	Benedict College*	Columbia, SC	2:00 p.m.
10/23	Morehouse College*	Atlanta, GA	2:00 p.m.
10/30	Stillman College*	Albany, GA	2:00 p.m.
11/6	Fort Valley State Univ.*##	Columbus, GA	2:00 p.m.

* - SIAC Games ^ CST
 + - Dr. Joseph Winthrop Holley Game
 # - Homecoming '10
 ## - 21st Annual Fountain City Classic

Mike White, Head Coach

Assistant Coaches: Rickey Alexander, Steven Smith, Kenyan Conner, Dan Land, Uyl Joyner, Anthony Kelly, William Chunn, Christopher Henderson

Dr. Everette J. Freeman, President

Dr. Richard H. Williams, Director of Athletics (Interim)

Stephanie Harrison-Dyer, Assistant Director of Athletics

Edythe Y. Bradley, Sports Information Director

229-430-4673 • edythe.bradley@asurams.edu

SIAC CHAMPIONS

1984 1985 1986 1988 1993 1994 1995 1996 1997 2003 2004 2005 2006



NCAA DIVISION II PLAYOFFS

1993 1994 1995 1996 1997 2004 2005 2006 2007 2008 2009



NASA and Albany State University present ...

Summer of Innovation Camp

Inspire, Engage and Educate!



JULY 12 - 23, 2010

8:00 - 12:00PM

Monroe Comprehensive
High School
Old Vocation Building

NASA Glenn's Summer of Innovation is a White House Initiative to reduce the "academic slide" that occurs in students during the summer holiday. As such, Albany State University will host a **FREE** science, technology, engineering, and mathematics based camp from July 12-23, 2010. Students will engage in hands-on, inquiry based activities provided by NASA.

The camp will accept the first 1,000 REGISTERED applicants who submit all materials by **July 7, 2010 at 5:00PM**. Registration is open to students who will enroll in grades 5-8 during the 2010-2011 academic year. **Application materials are available at ASU, ACAD, Room 383.** For information, contact Ms. Danielle Johnson, at the numbers provided below.

Topics of interest

include:

- *Explore the Solar System*
- *Human Mars Missions*
- *The Four Forces of Flight*
 - *Paper Planes*
 - *Aerodynamics*
- *Careers in Aviation*
- *GPS Amateur Radio*
 - *Aerodynamics*
- *Careers in Aviation*



Contact Information

Ms. L. Danielle Johnson
229-430-2833 office
229-430-3691 fax
ljohns45@asurams.edu